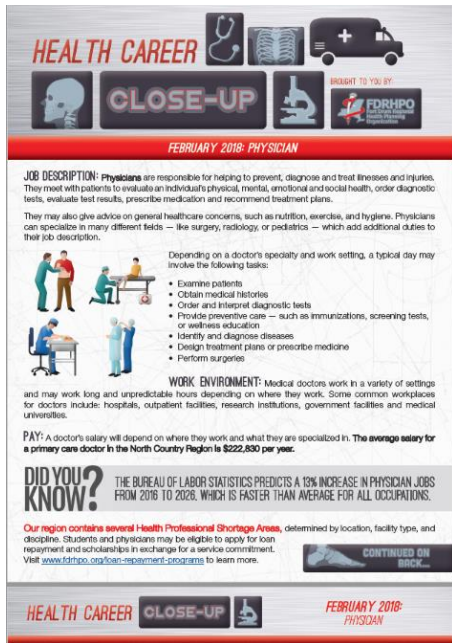


# INTERESTED IN A CAREER IN HEALTH CARE OR KNOW SOMEONE WHO IS EXPLORING A HEALTHCARE PROFESSION?

## FORT DRUM REGIONAL HEALTH PLANNING ORGANIZATION'S HEALTH CAREER CLOSE-UP CAN HELP YOU LEARN MORE!



### WHAT IS A HEALTH CAREER CLOSE-UP?

An informative publication highlighting specific health care professions in Jefferson, Lewis and St. Lawrence Counties including:

- a job description
- salaries
- the work environment
- educational requirements
- local education and training programs
- employment outlook

### WHO IS THE TARGET AUDIENCE?

Parents, teachers, school counselors, students, family members, friends... **anyone & everyone!** Whether you are exploring yourself or for someone else, these publications are prepared for your use. Share them widely!

### WHY IS THIS IMPORTANT?

- There are many opportunities in healthcare. The *Health Career Close Up* provides an easy to understand snapshot of these options & how to best prepare for a career in healthcare.
- Our region needs more health professionals! The North Country Region (Jefferson, Lewis, and St. Lawrence counties) has been designated as a Health Professional Shortage Area in both the primary and mental health care fields.
- The *Health Career Close Ups* help spread awareness and inform the community about high demand health professions.

**PREVIOUS ISSUES:** Medical Laboratory Technologist, Physician, Emergency Medical Services Provider, Certified Alcohol and Substance Abuse Counselor, and Nursing.

To view these, please visit:

<https://fdrhpo.org/health-workforce/career-exploration-resources/#closeup>

**STAY TUNED!** Upcoming *Health Career Close-Up* issues include Social Work, Care Coordinator, Nurse Practitioner, Physician Assistant, Health Information Technologist, Physical Therapy, and Speech Therapy.

May 2019

